

Integrated Bite Case Management (IBCM)

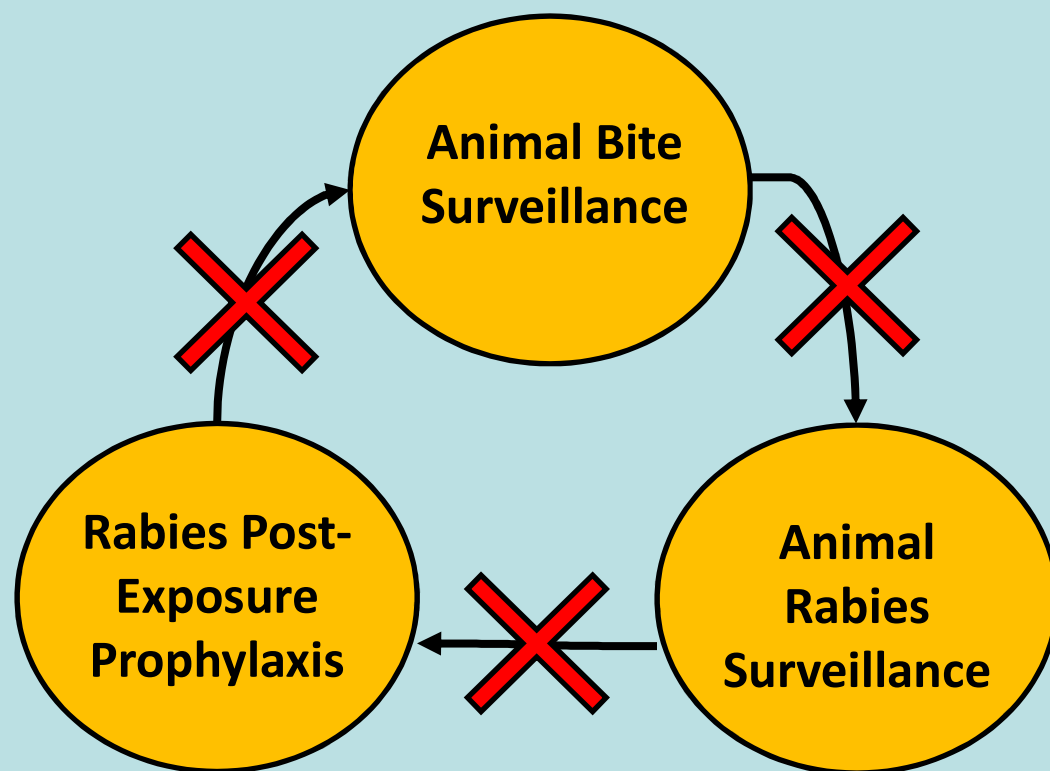
Emily Pieracci, DVM, MPH, DACVPM
Poxvirus and Rabies Branch
U.S. Centers for Disease Control and Prevention

The findings and conclusions in this report are those of the authors and do not necessarily represent the views of the Centers for Disease Control and Prevention



Integrated Bite Case Management

INTERVENTION-BASED SURVEILLANCE SYSTEMS



"Too Late" Surveillance Systems

Human Rabies Surveillance



I. Animal Bite Surveillance

- ❑ **One Health**: system requires reporting of bites from health centers and community health workers to animal rabies surveillance officers



II. Bite Investigation

❑ One Investigation, Two Components

- Animal rabies investigation (completed by animal health workers)
- Victim bite investigation (completed by human healthcare workers)



III. Safe Animal Capture



IV. Animal Rabies Assessment

- ❑ Animals are assessed for signs of rabies
 - Signs of rabies present= euthanasia
 - Appears Healthy = quarantine for 10 days



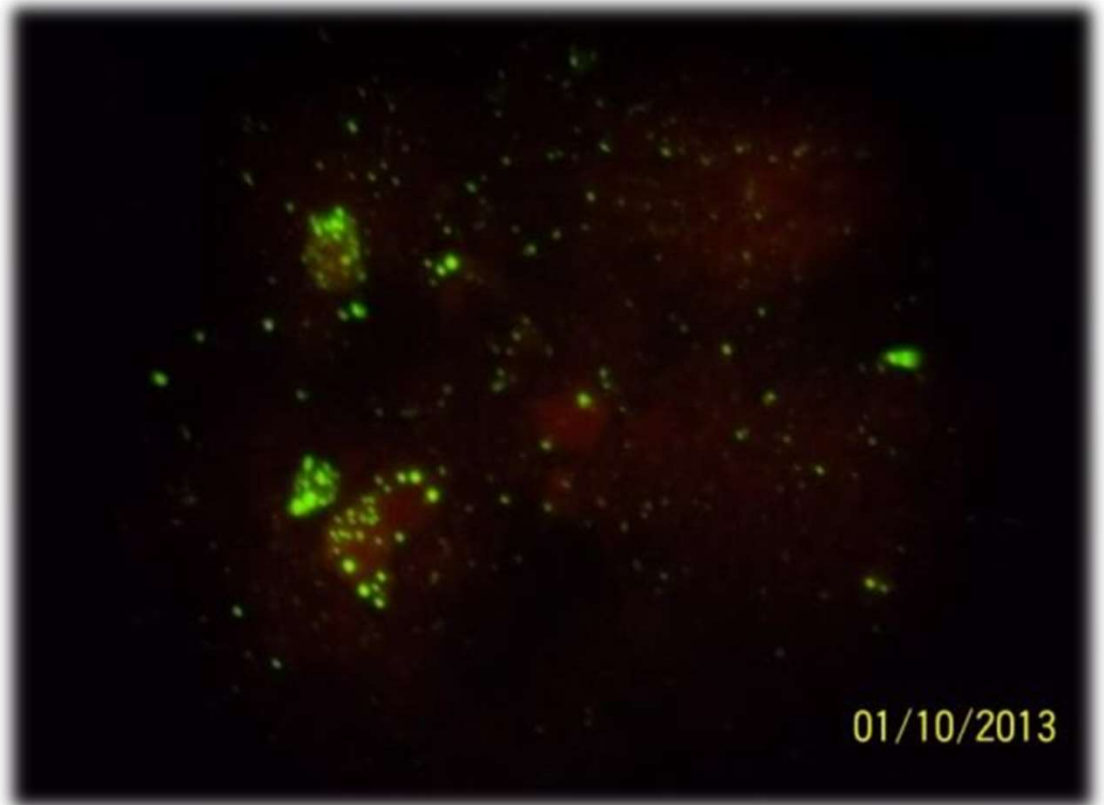
V. Quarantine

- ❑ Home quarantine or use local resources (shelter)
- ❑ Shedding of virus occurs for up to 10 days prior to signs of disease
- ❑ Animals healthy after 10 days do not have rabies



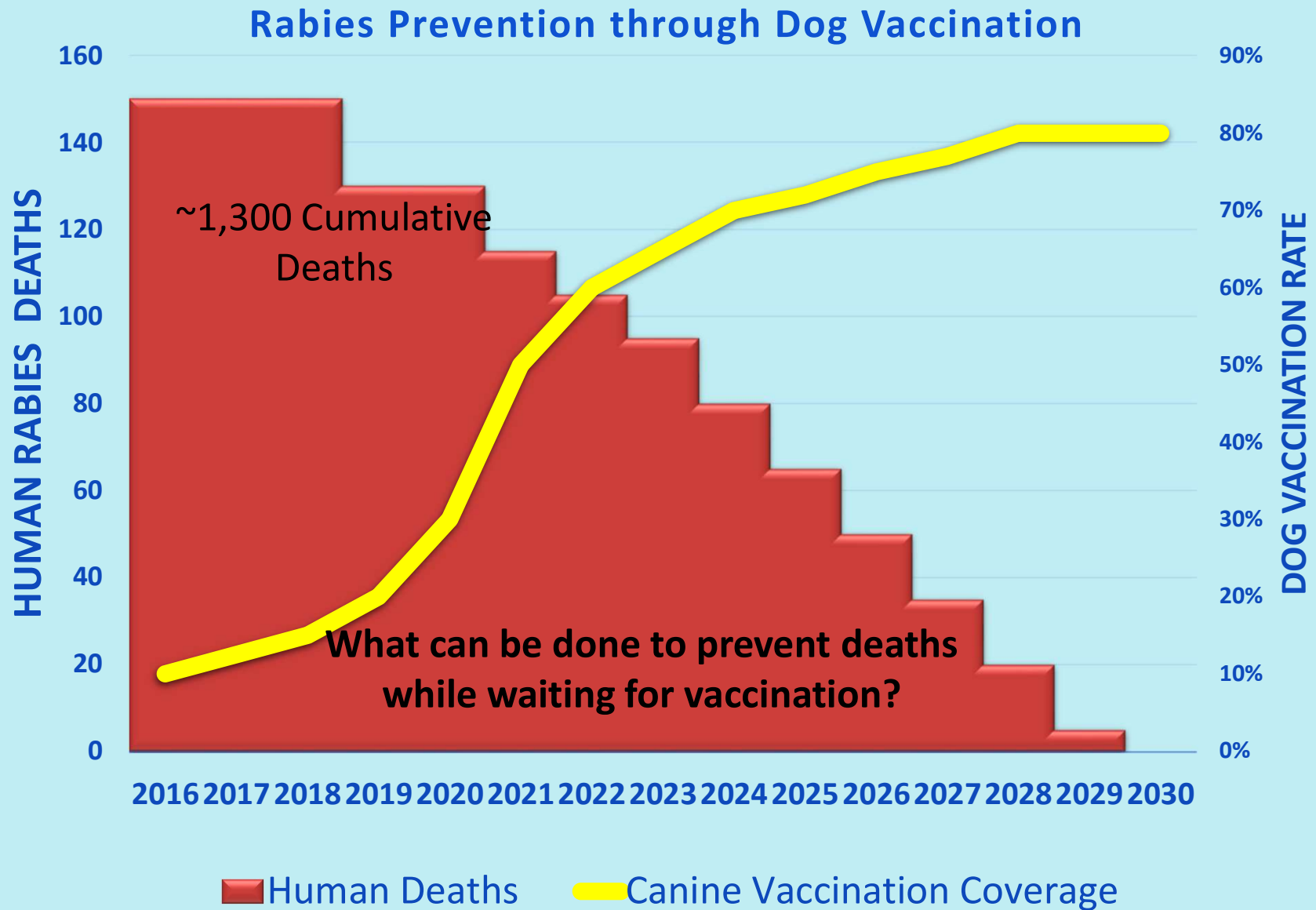
VI. Laboratory Confirmation

- ❑ If animal develops signs of rabies:
 - At initial assessment
 - During 10 day quarantine
- ❑ Euthanize and submit for testing



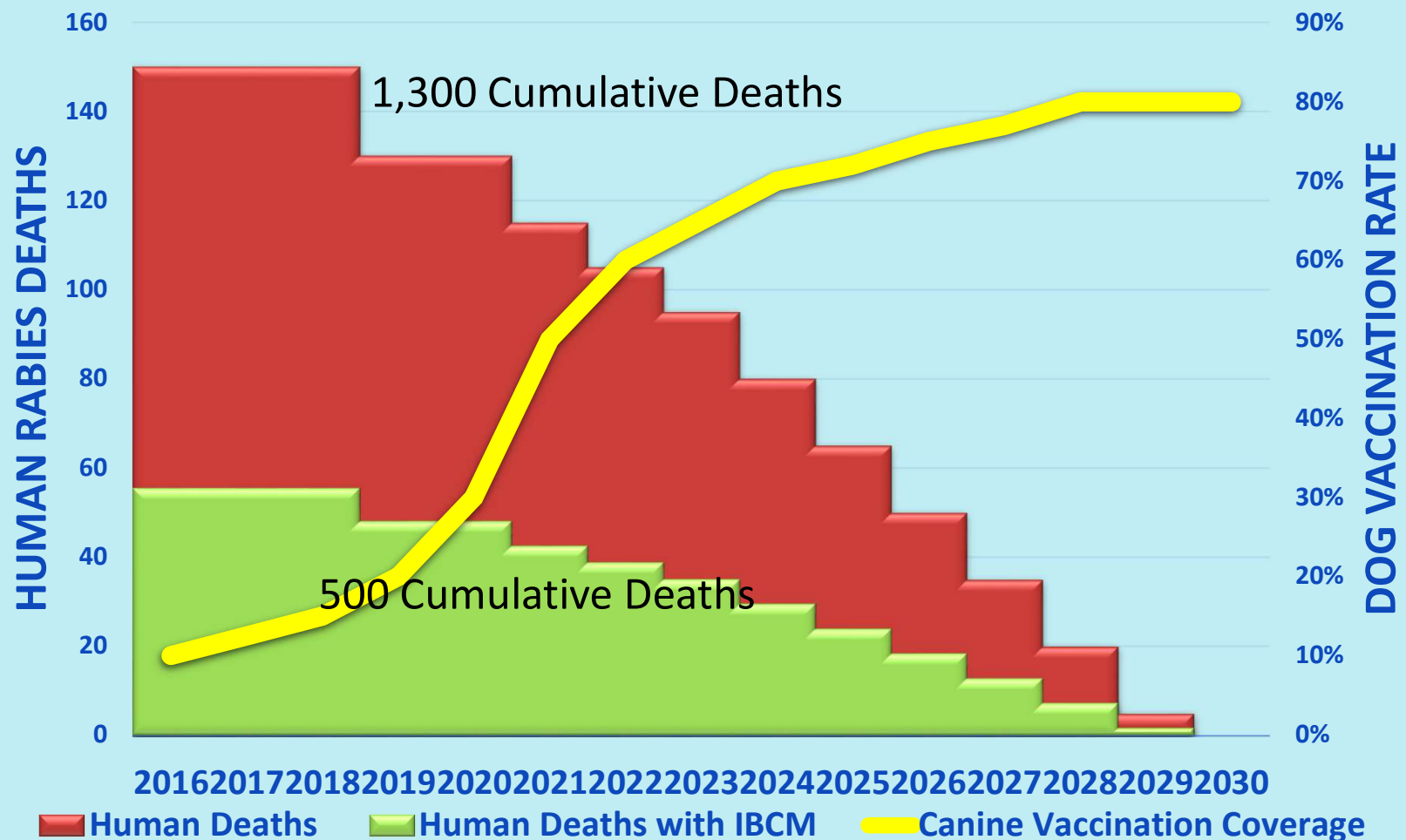
01/10/2013

Focus only on mass vaccination?



Combined approach: IBCM and Mass Vaccination

Dog Vaccination and IBCM Potential Impact on Human Rabies Deaths



Benefits of Rabies Surveillance

- ❑ Find rabid animals and remove from community
 - Decrease animal exposures
 - Decrease human exposures
- ❑ Reduce the unnecessary use of PEP
 - PEP not needed for bites from healthy animals
 - Cost savings to government and citizens
- ❑ Ensure PEP given to those exposed to confirmed rabid animals
 - Identify additional bite victims
- ❑ Data gathered will help provide disease burden estimates
- ❑ Increased government support for control

Questions?

For more information please contact:

Dr. Emily Pieracci

Dr. Ryan Wallace

Epieracci@cdc.gov

Rwallace@cdc.gov

