

Introduction to the Rabies Blueprint

Global Alliance for Rabies Control

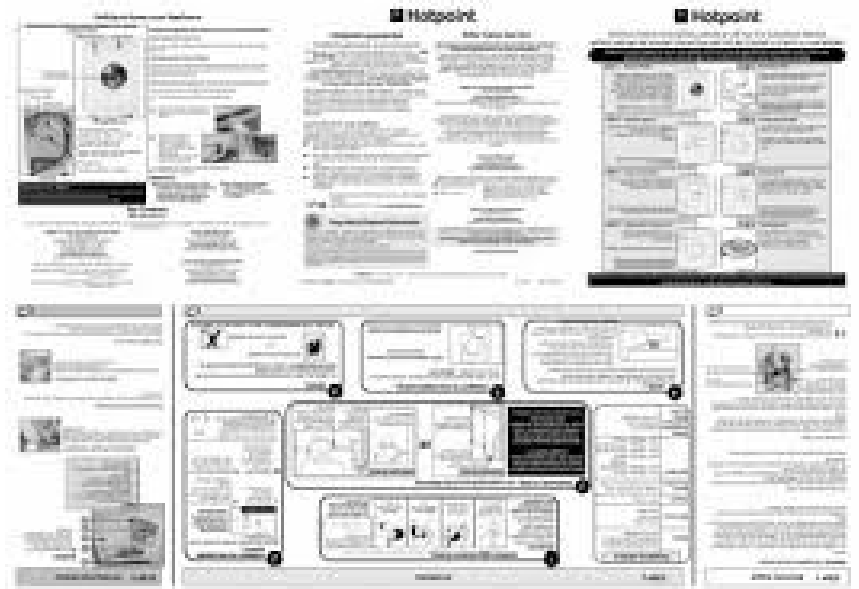
7 February 2017

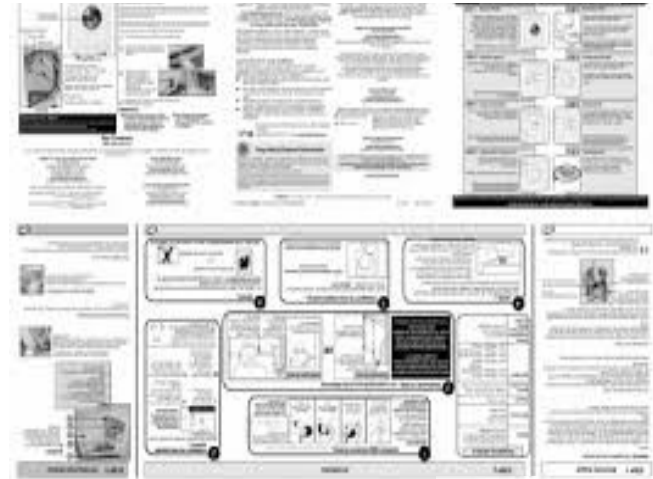
Nairobi, Kenya



www.rabiesalliance.org







rabiesblueprint

The Blueprint for Rabies Prevention and Control has been developed by global rabies experts to serve as a guide for countries that would like to prevent human rabies by eliminating animal rabies within their borders.

It provides access to all relevant international guidelines for rabies control and prevention, together with practical information, advice and case studies on how rabies control can be achieved.



What area of rabies are you most interested in?



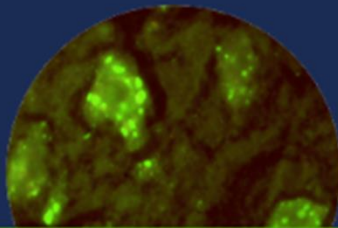
Canine rabies

Visit caninerabiesblueprint.org



Fox rabies

Visit foxrabiesblueprint.org



Rabies Surveillance

Visit rabiessurveillanceblueprint.org



CanineRabiesBlueprint.org

caninerabiesblueprint.org

a blueprint for the control of rabies
in dog populations



ELIMINATE CANINE RABIES

- Introduction
- Roles and Responsibilities
- Infrastructure, legislative framework, costs and funding
- Communications plan
- Operational activities
- The Stepwise Approach towards Rabies Elimination: a tool for planning and evaluation

LINKS

- Case studies
- Documents

CONTRIBUTORS

- All the contributors

WELCOME

The Blueprint for Canine Rabies Prevention and Control has been developed by global rabies experts to serve as a guide for countries that would like to prevent human rabies by eliminating canine rabies within their borders.

VERSION 3 - UPDATED AND EXPANDED - IS NOW COMPLETED.
GARC, September 2014



What information is on the Blueprint?

- The Blueprint contains information on:
 - Collecting epidemiological data
 - What needs to be procured for vaccination campaigns
 - How to estimate the dog population
 - Who needs to be trained (and in what jobs)
 - How to evaluate the efficacy of a campaign
 -

What information is on the Blueprint

Home page | Contact | Site Map


Search site

CANINE RABIES

English

caninerabiesblueprint.org

a blueprint for the control of rabies
in dog populations



ELIMINATE CANINE RABIES

LINKS



Case studies

Documents

- Canine Rabies Blueprint - What can I do if I do not have a fluorescent microscope in my laboratory?
- Canine Rabies Blueprint - What supplies do we need for laboratory-based rabies diagnosis using the fluorescence antibody test?
- Information from the CDC on ante mortem testing
- Rabies vaccine-use calculator
- Novartis Vaccines homepage
- Zydus Cadila homepage
- Serum Institute of India homepage

Home page > LINKS > Documents

Guidelines for dog population management


- ▶ ICAM Humane dog population management guidance
 - 
Dog population management ICAM
- ▶ Guidelines on stray dog population control, OIE Terrestrial Animal Health Code
 - 
Stray dog control OIE

ICAM = International Companion Animal Management Coalition
OIE = World Organisation for Animal Health

Visit Alliance for Rabies Control website

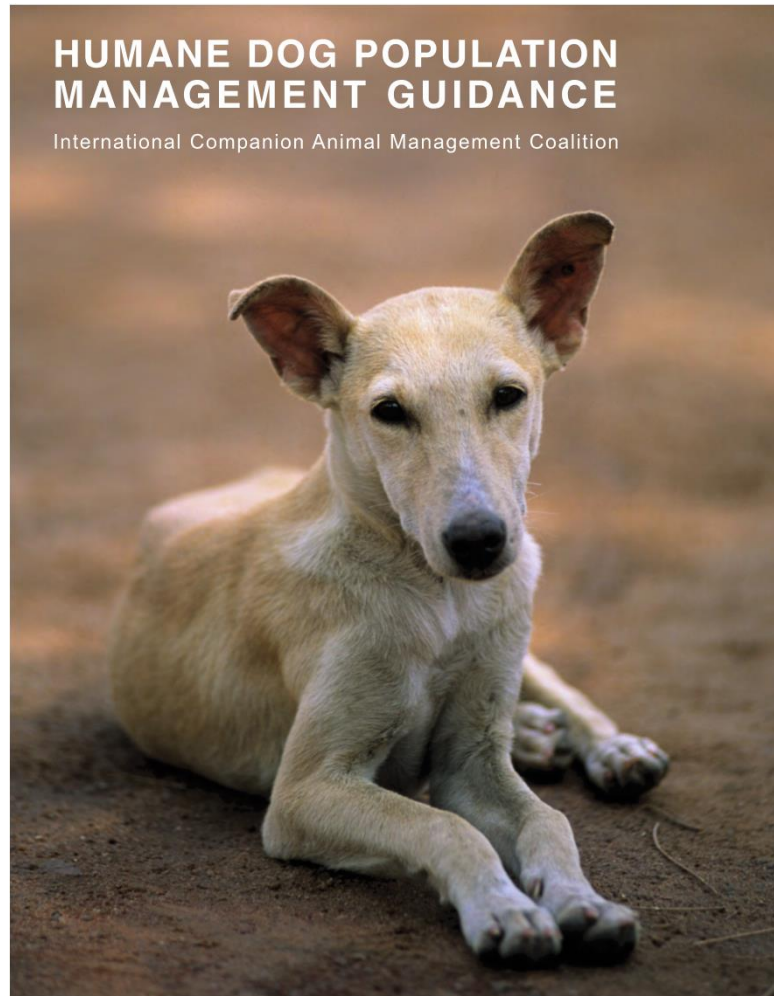
FAO ECTAD Regional Unit W & C Africa Bamako

CONTACT



http://www.oie.int/fileadmin/Home/eng/Health_standards/tahc/2010/ch...pd

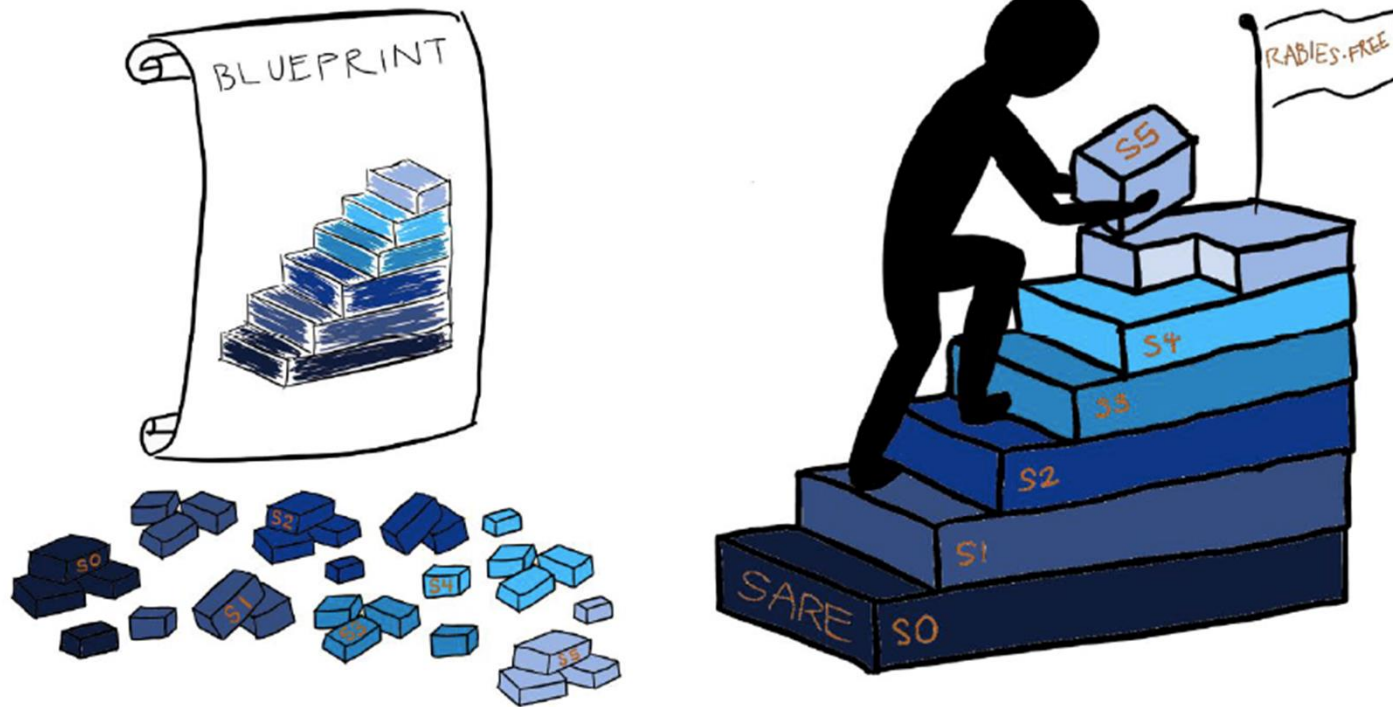
What information is on the Blueprint



How the Rabies Blueprint and SARE fit together

- The SARE and the Blueprint are complementary tools
- SARE shows you
 - **where** the gaps are in each stage towards elimination
 - **what** you need to do next to progress
- The Blueprint shows you , in detail, **how** to fill the gaps and progress to the next stage in the SARE scale

How the Rabies Blueprint and SARE fit together



To summarize:

- The Blueprint provides you with many helpful resources
 - ordered in a logical manner and
 - linked to relevant parts of the SARE
- Together the SARE and Blueprint can help you to reach elimination in a step by step approach